

F, 30'
36 SLIPS LISTED
4 SLIPS LABELED DO NOT USE
ALL OTHERS FULL

E 24'
48 SLIPS NOTED

G FLOAT 40' NORTH/SOUTH
24 SLIPS, 22 BOATS,
2 SLIPS NOT IN SERVICE

H FLOAT 40' NORTH/SOUTH
20 SLIPS, 18 BOATS
2 SLIPS NOT IN SERVICE

I FLOAT 40' N/S
20 SLIPS, 16 BOATS
4 NOT IN SERVICE

J FLOAT 48' N/S
36 SLIPS/35 BOATS
LEAVE ONE SLIP OPEN

K FLOAT 60' N
18 BOATS/SLIPS

K FLOAT 55',60',62' S
18 SLIPS/BOATS

L FLOAT, 62'-85' NORTH/SOUTH
32 SLIPS/BOATS

EE
23'
18 SLIPS LISTED
3 BOATS IN SLIPS
3 SLIPS - DO NOT USE

S FLOAT VARIED
7 BOATS/SLIPS NOTED
13 SLIPS DESIGNATED = 24'

R
R FLOAT VARIED
14 SLIPS, 2 NOT USED, 7 BOATS
USE 40'

Q FLOAT, VARIED LENGTH
23 SLIPS, 21 BOATS
USE 48'

LENGTH PROVIDED	WAIT LIST	TOTAL
20' = 19 EA	1	20
23' = 3 EA		
24' = 48+2+13=63 EA		
26' =	9	75
30' = 32+2=34 EA	7	41
36' =	13	13
40' = 22+18+16+6+14=76 EA	3	79
48' = 35+2+21=58 EA		
50' =	15	73
60' = 36+32+5= 73 EA	7	80
total 328		381

EXISTING HARBOR

PRELIMINARY 3/11/2024

ST. HERMAN HARBOR
E THRU L FLOAT REPLACEMENT
HARBOR PLAN
EXISTING HARBOR

REV	BY	DATE	DESCRIPTION

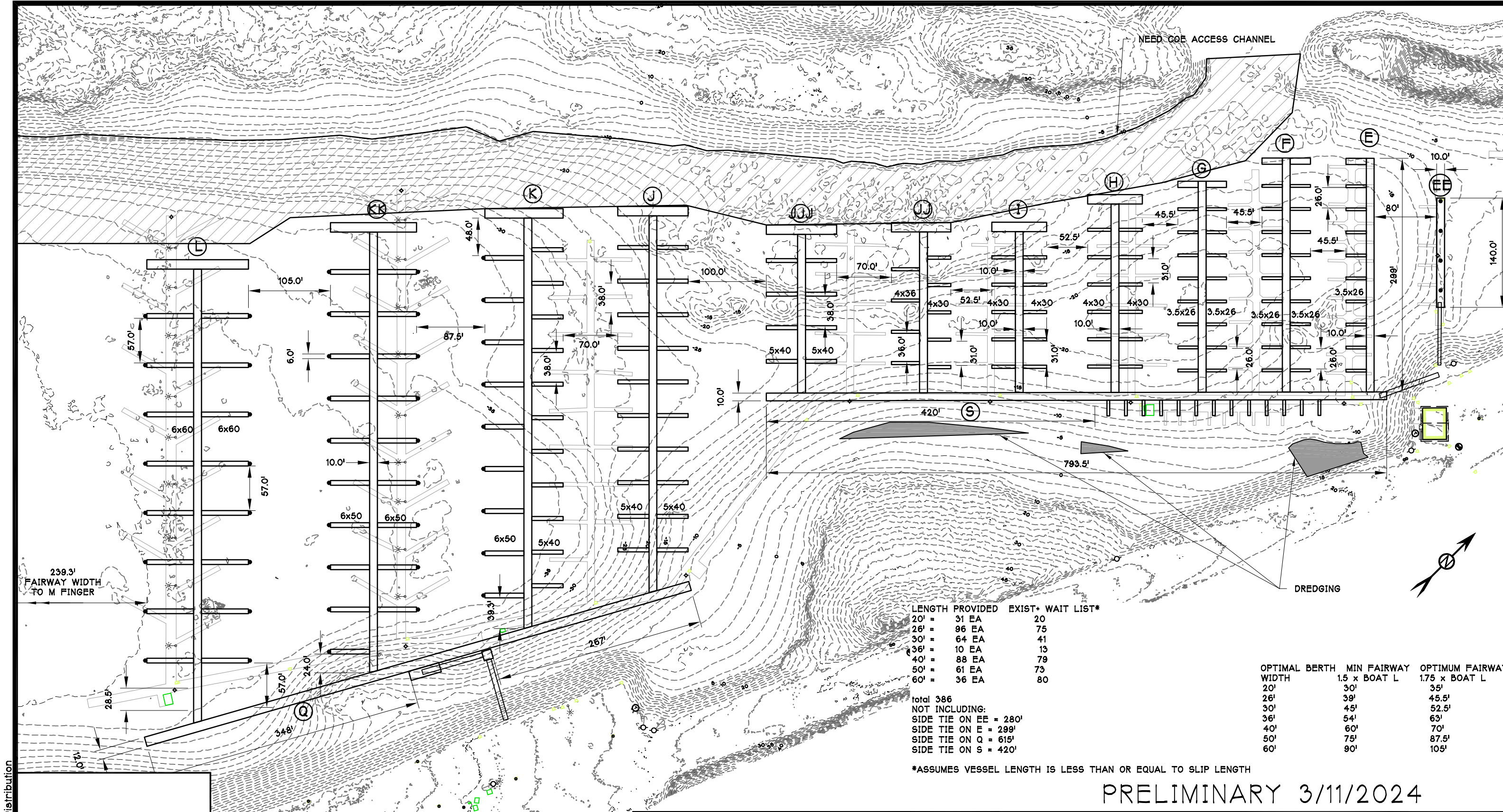
AJD
ENGINEERING
p (360) 770-1746
f (360) 766-6013
allen@ajdengineering.com

TRANSPAC
MARINAS
P.O. BOX 1169
ANACORTES
WASHINGTON
U.S.A. 98221
(360) 293-8888

DATE: MAR 2024	JOB NO.	SHEET: 1 OF	REVISED:
DRAWN BY: AJD	CHECKED BY:	APPROVED BY: DJJ	

THIS DRAWING IS THE PROPERTY OF AND CONTAINS INFORMATION WHICH BELONGS TO TRANSPAC MARINAS, INC. IT IS BEING LOANED WITH THE UNDERSTANDING THAT IT MAY NOT BE REPRODUCED OR USED IN ANY WAY THAT WOULD BE INJURIOUS TO TRANSPAC'S INTERESTS. DETAILS MAY BE PROTECTED UNDER ONE OR MORE OF THE FOLLOWING U.S. PATENTS: 4,709,647 -4,887,654 -4,940,021 -5,347,948 -5,529,012 -6,450,737 -7,390,141 -8,136,468 -8,287,208 -8,308,397 -8,317,429 -8,506,205

DRAWING Not For Distribution



LENGTH PROVIDED	EXIST*	WAIT LIST*
20'	31 EA	20
26'	96 EA	75
30'	64 EA	41
36'	10 EA	13
40'	88 EA	79
50'	61 EA	73
60'	36 EA	80

total 386
 NOT INCLUDING:
 SIDE TIE ON EE = 280'
 SIDE TIE ON E = 299'
 SIDE TIE ON Q = 615'
 SIDE TIE ON S = 420'

OPTIMAL BERTH WIDTH	MIN FAIRWAY 1.5 x BOAT L	OPTIMUM FAIRWAY 1.75 x BOAT L
20'	30'	35'
26'	39'	45.5'
30'	45'	52.5'
36'	54'	63'
40'	60'	70'
50'	75'	87.5'
60'	90'	105'

*ASSUMES VESSEL LENGTH IS LESS THAN OR EQUAL TO SLIP LENGTH

DRAWING Not For Distribution

PND CONCEPT 2

THIS DRAWING IS THE PROPERTY OF AND CONTAINS INFORMATION WHICH BELONGS TO TRANSPAC MARINAS, INC. IT IS BEING LOANED WITH THE UNDERSTANDING THAT IT MAY NOT BE REPRODUCED OR USED IN ANY WAY THAT WOULD BE INJURIOUS TO TRANSPAC'S INTERESTS. DETAILS MAY BE PROTECTED UNDER ONE OR MORE OF THE FOLLOWING U.S. PATENTS: 4,709,647 -4,887,654 -4,940,021 -5,347,948 -5,529,012 -6,450,737 -7,390,141 -8,136,468 -8,287,208 -8,308,397 -8,317,429 -8,506,205

REV	BY	DATE	DESCRIPTION

AJD
 ENGINEERING
 p (360) 770-1746
 f (360) 766-6013
 allen@ajdengineering.com

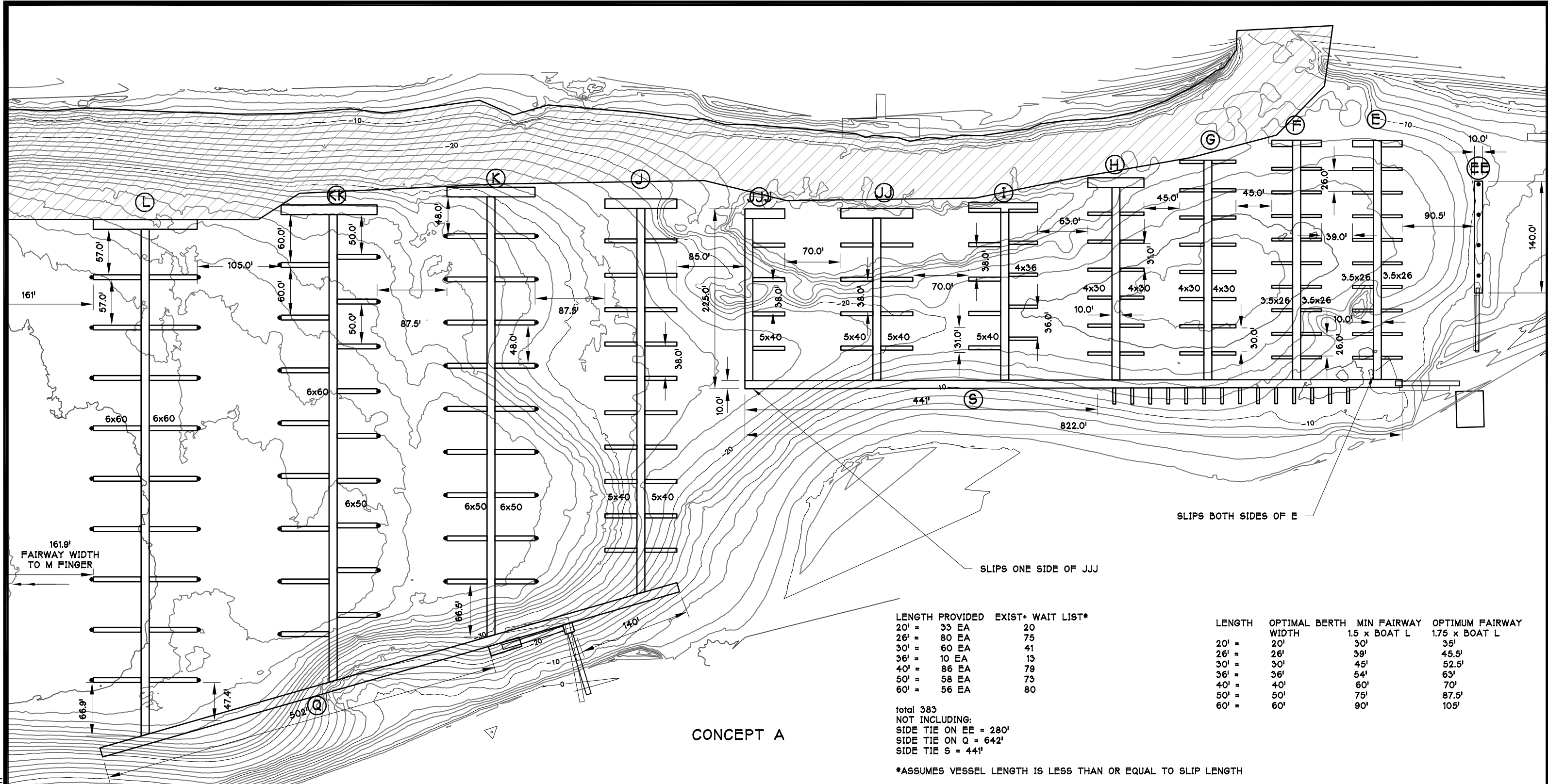
TRANSPAC
 MARINAS

P.O. BOX 1169
 ANACORTES
 WASHINGTON
 U.S.A. 98221
 (360) 293-8888

PRELIMINARY 3/11/2024

ST. HERMAN HARBOR
 E THRU L FLOAT REPLACEMENT
 PND CONCEPT 2

DATE: MAR 2024	JOB NO.	SHEET: 2 OF	REVISED:
DRAWN BY: AJD	CHECKED BY:	APPROVED BY: DJJ	



CONCEPT A

PRELIMINARY 3/11/2024

ST. HERMAN HARBOR
 E THRU L FLOAT REPLACEMENT
 CONCEPT A

REV	BY	DATE	DESCRIPTION

AJD
 ENGINEERING
 p (360) 770-1746
 f (360) 766-6013
 allen@ajdengineering.com

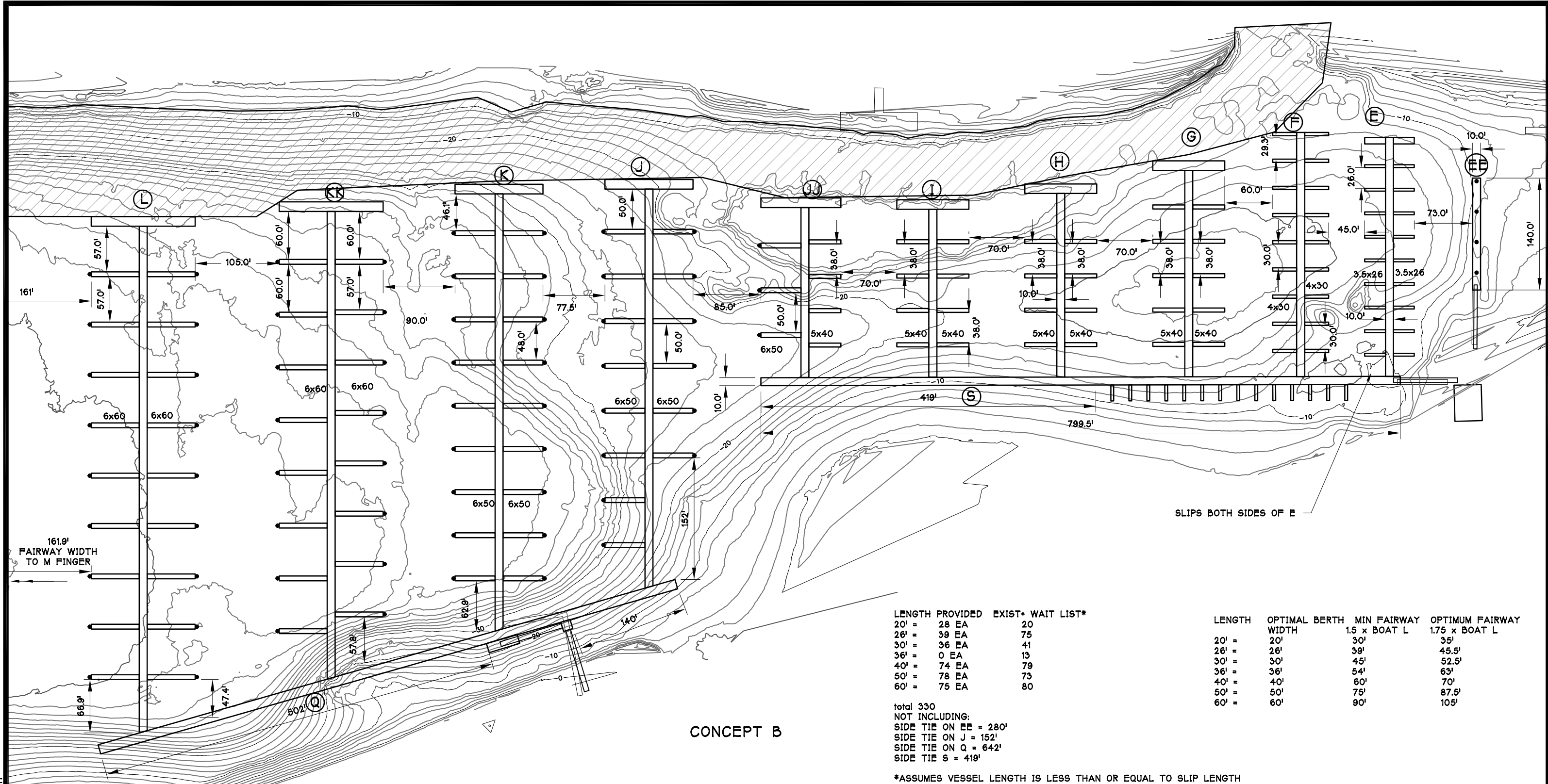
TRANSPAC
 MARINAS

P.O. BOX 1169
 ANACORTES
 WASHINGTON
 U.S.A. 98221
 (360) 293-8888

DATE: MAR 2024	JOB NO.	SHEET: 3 OF	REVISED:
DRAWN BY: AJD	CHECKED BY:	APPROVED BY: DJJ	

THIS DRAWING IS THE PROPERTY OF AND CONTAINS INFORMATION WHICH BELONGS TO TRANSPAC MARINAS, INC. IT IS BEING LOANED WITH THE UNDERSTANDING THAT IT MAY NOT BE REPRODUCED OR USED IN ANY WAY THAT WOULD BE INJURIOUS TO TRANSPAC'S INTERESTS. DETAILS MAY BE PROTECTED UNDER ONE OR MORE OF THE FOLLOWING U.S. PATENTS: 4,709,647 -4,887,654 -4,940,021 -5,347,948 -5,529,012 -6,450,737 -7,390,141 -8,136,468 -8,287,208 -8,308,397 -8,317,429 -8,506,205

DRAWING Not For Distribution



CONCEPT B

LENGTH PROVIDED	EXIST+ WAIT LIST*
20' = 28 EA	20
26' = 39 EA	75
30' = 36 EA	41
36' = 0 EA	13
40' = 74 EA	79
50' = 78 EA	73
60' = 75 EA	80

LENGTH	OPTIMAL BERTH WIDTH	MIN FAIRWAY 1.5 x BOAT L	OPTIMUM FAIRWAY 1.75 x BOAT L
20'	20'	30'	35'
26'	26'	39'	45.5'
30'	30'	45'	52.5'
36'	36'	54'	63'
40'	40'	60'	70'
50'	50'	75'	87.5'
60'	60'	90'	105'

total 330
 NOT INCLUDING:
 SIDE TIE ON EE = 280'
 SIDE TIE ON J = 152'
 SIDE TIE ON Q = 642'
 SIDE TIE S = 419'

*ASSUMES VESSEL LENGTH IS LESS THAN OR EQUAL TO SLIP LENGTH

PRELIMINARY 3/11/2024

ST. HERMAN HARBOR
 E THRU L FLOAT REPLACEMENT
 CONCEPT B

REV	BY	DATE	DESCRIPTION

AJD
 ENGINEERING
 p (360) 770-1746
 f (360) 766-6013
 allen@ajdengineering.com

TRANSPAC
 MARINAS

P.O. BOX 1169
 ANACORTES
 WASHINGTON
 U.S.A. 98221
 (360) 293-8888

DATE: MAR 2024	JOB NO.	SHEET: 4 OF	REVISED:
DRAWN BY: AJD	CHECKED BY:	APPROVED BY: DJJ	

THIS DRAWING IS THE PROPERTY OF AND CONTAINS INFORMATION WHICH BELONGS TO TRANSPAC MARINAS, INC. IT IS BEING LOANED WITH THE UNDERSTANDING THAT IT MAY NOT BE REPRODUCED OR USED IN ANY WAY THAT WOULD BE INJURIOUS TO TRANSPAC'S INTERESTS. DETAILS MAY BE PROTECTED UNDER ONE OR MORE OF THE FOLLOWING U.S. PATENTS: 4,709,647 -4,887,654 -4,940,021 -5,347,948 -5,529,012 -6,450,737 -7,390,141 -8,136,468 -8,287,208 -8,308,397 -8,317,429 -8,506,205

DRAWING Not For Distribution